



INTERNATIONAL FUEL INJECTION

EXPERTISE THAT KEEPS YOU **RUNNING**

2014-2015 PRODUCT **CATALOG**



COMPANY HISTORY

Midwest Fuel Injection was founded in 1981 by Geret Seidel. Current operations are in our state-of-the-art facility in Bolingbrook, IL. Midwest has over 100 dedicated employees at 8 locations whose commitment is to provide superior quality service and workmanship. This goal, along with strong service support and knowledgeable factory-trained technicians, has contributed to continued growth.

Midwest is a strong supporter of the ADS/SAE TechCert certification program and employs highly trained certified technicians. We operate some of the most accurate computerized test equipment available in our repair facilities, including the diesel emissions RTT 100 Opacimeter. We are able to perform factory warranty repairs on even the newest fuel systems (BOSCH "EDC", STANADYNE "DS", ZEXEL, "ME-TICS", LUCAS, and "HEUI").

In 1995, we began to service the automotive gasoline injector receiving very positive feedback from our customers. We have since expanded this product line to include new injectors as well as repair/exchange units. With changing technologies, increased EPA emission awareness, and the increased cost of down-time, quality service is always in demand. Our parts departments maintain a large inventory of O.E.M. spare parts, so there is no need to wait a long time for quality service. Electronic injectors are also available.

January 1981

Midwest Fuel Injection opens in Orland Park, IL.

July 1993

Midwest Fuel Injection opens its second shop in Palatine, IL.

April 1998

Midwest purchases the diesel repair division of C.A. Khronne and Sons in Springfield, MA. Later this year operations are moved to Agawam, MA. Because of its east coast location the shop becomes the first Metro Fuel Injection.

December 2005

Midwest headquarters moves from Orland Park, IL to their new state of the art facility in Bolingbrook, IL.

January 2008

Midwest Fuel Injection acquires Illinois Valley Diesel Injection Service in Peru, IL. This becomes the third Midwest location.

November 2009

Midwest Fuel Injection acquires Vans Fuel Injection in Marion, IA. This becomes the fourth Midwest location.

May 2010

Midwest Fuel Injection acquires Fuel Injection Sales & Service, Inc. in Allentown, PA. This becomes the second Metro location.

December 2010

Midwest Fuel Injection acquires H&L Fuel Injection in Deep River, CT. This becomes the third Metro location.

July 2011

Midwest Fuel Injection expands to the west coast acquiring Northern Factors Diesel in Portland, OR. Because of the west coast location the shop becomes the first Pacific Fuel Injection.

September 2013

We opened our Clean Room at our Bolingbrook Headquarters. The Clean Room enables us to produce the highest quality remanufactured common rail injectors. We use the Bosch process to rebuild our injectors, assuring our customers of the highest quality standards in the world.

February 2015

Midwest Fuel Injection expands to the southern United States in Boca Raton, FL. Because of their access to international ports the shop becomes the first International Fuel Injection.

TABLE OF CONTENTS

Additives.....	5
Dodge.....	9
International/Navistar.....	13
Ford.....	19
Chevy/Gmc.....	25
Volkswagen.....	29
Caterpillar.....	33
Cummins.....	35
Hino.....	39
John Deere.....	41
Mack Trucks.....	45
Mitsubishi.....	47
New Holland.....	49
Perkins.....	51
Volvo.....	53

ADDITIVES



STANADYNE®

Poor quality diesel fuel can cause performance issues, premature wear, gumming of components, and plugged filters. To resolve these issues and to provide protection of the fuel injection system, Stanadyne developed its own line of diesel fuel additives. They are the only additives made by a fuel injection systems manufacturer.

Stanadyne diesel fuel additives protect and improve the performance of all diesel fuel injection systems including:

- High pressure common rail
- Unit injectors
- Rotary distribution pumps
- In-line pumps

NOTE

All Stanadyne Diesel Fuel Additives can be blended with each other and "double-dosing" is not damaging, although it may not provide twice the benefit. Where engine and vehicle OEMs have approved Stanadyne, most of them recommend Performance Formula, which should be used year-round to ensure protection against fuel related problems.

STANADYNE PERFORMANCE FORMULA®

The premium all-season, multi-function diesel fuel additive, designed to tackle virtually any diesel fuel related problem.



One Shot 8oz.

Treats 30 gallons diesel fuel per bottle
ADD38564 - Individual Bottle
ADD38564C - Case of 24



Pint Bottle 16oz.

Treats 60 gallons diesel fuel per bottle
ADD38565 - Individual Bottle
ADD38565C - Case of 12



1/2 Gallon Bottles

Treats 240 gallons diesel fuel per bottle
ADD38566 - Individual Bottle
ADD38566C - Case of 6



5 Gallon Pail

Treats 2,500 gallons diesel fuel per pail
ADD38567 - Individual Pail
ADD38567S - Skid of 36

55 Gallon Drum Also Available

STANADYNE PERFORMANCE FORMULA JUNIOR®

Most of the features of Performance Formula®, but without the cetane improver or cold weather protection.



One Shot 8oz.

Treats 30 gallons diesel fuel per bottle
ADD38569 - Individual Bottle
ADD38569C - Case of 24



Pint Bottle 16oz.

Treats 120 gallons diesel fuel per bottle
ADD38570 - Individual Bottle
ADD38570C - Case of 12



1/2 Gallon Bottles

Treats 480 gallons diesel fuel per bottle
ADD38571 - Individual Bottle
ADD38571C - Case of 6



5 Gallon Pail

Treats 5,000 gallons diesel fuel per pail
ADD38572 - Individual Pail
ADD38572S - Skid of 36

55 Gallon Drum Also Available

STANADYNE LUBRICITY FORMULA®

Extra strength lubricity improver for use with very dry or "winter blend" fuels such as, jet fuel, kerosene or #1 diesel.



One Shot 8oz.

Treats 15 gallons diesel fuel per bottle
ADD38559 - Individual Bottle
ADD38559C - Case of 24



Pint Bottle 16oz.

Treats 120 gallons diesel fuel per bottle
ADD38560 - Individual Bottle
ADD38560C - Case of 12



1/2 Gallon Bottles

Treats 480 gallons diesel fuel per bottle
ADD38561 - Individual Bottle
ADD38561C - Case of 6



5 Gallon Pail

Treats 5,000 gallons diesel fuel per pail
ADD38562 - Individual Pail
ADD38562S - Skid of 36

55 Gallon Drum Also Available

STANADYNE WINTER 1000®

Economic cold weather protection.



Pint Bottle 16oz.

Treats 120 gallons diesel fuel per bottle
ADD38574 - Individual Bottle
ADD38574C - Case of 12



5 Gallon Pail

Treats 5,000 gallons diesel fuel per pail
ADD38575 - Individual Pail
ADD38575S - Skid of 36

55 Gallon Drum Also Available



FPPF offers a **wide variety of additive and chemical products**. They pursue aggressive research and development of new quality products designed to fill the needs of an ever-changing additive marketplace.



Lubricity Plus Fuel Power 32oz. Bottle

Treats 250 gallons diesel fuel per bottle
FPF90105 - Individual Bottle



KILLEM Biocide 16oz. Bottle

Treats 1,920 gallons diesel fuel per bottle
FPF90119 - Individual Bottle



HOT 4-in-1 Heating Oil Treatment 16oz. Bottle

Treats 275 gallons of oil per bottle
FPF90161 - Individual Bottle



Total Power 32oz. Bottle

Treats 250 gallons diesel fuel per pail
FPF90343 - Individual Bottle



Agri Fuel Treatment 32oz. Bottle

Treats 375 gallons diesel fuel per drum
ADD90351 - Individual Bottle



Bio Diesel Winter Treat 32oz. Bottle

Treats 250 gallons diesel fuel per bottle
FPF90603 - Individual Bottle



POWER SERVICE DIESEL FUEL SUPPLEMENT + CETANE BOOST

Arctic Formula - Use When Temperatures Drop Below 30 Degrees Fahrenheit. For Maximum Winter Operability.



32oz. Bottle

Treats 100 gallons diesel fuel per bottle
ADD1025 - Individual Bottle
ADD1025C - Case of 12



80oz. Bottle

Treats 300 gallons diesel fuel per bottle
ADD1080 - Individual Bottle
ADD1080C - Case of 6

POWER SERVICE DIESEL 911

The product diesel engine operators call on when they have a fuel emergency.



32oz. Bottle

Treats 30-75 gallons diesel fuel per bottle
ADD8025 - Individual Bottle
ADD8025C - Case of 12



80oz. Bottle

Treats 100-200 gallons diesel fuel per bottle
ADD8080 - Individual Bottle
ADD8080C - Case of 6



**CALL AN EXPERT NEAR YOU
ABOUT YOUR ADDITIVE NEEDS**



Something you need not listed? Call an expert near you:

Bolingbrook, IL
815.886.9900

Palatine, IL
874.991.7867

Peru, IL
815.224.3439

Marion, IA
319.377.7365

Agawam, MA
319.377.7365

Allentown, PA
610.395.3718

Deep River, CT
860.526.5941

Portland, OR
503.283.5615

Boca Raton, FL
561.241.0242



DODGE





DODGE 5.9L

5.9L INJECTION PUMPS

VP44 FUEL INJECTION PUMPS



VP44027X 1998-2002 215HP & 235HP Dodge 5.9L
For trucks with Automatic & 5-speed Manual transmissions. Most common pump found on Dodge Pickup Trucks.

VP44028X 2000-2002 245HP Dodge 5.9L
For 2000-2002 trucks with 6-speed Manual transmissions. This pump is not as common as the VP44027X pump. To avoid core charges please provide the engine serial number below. This pump will not work for the 235 hp or 215 hp Dodge trucks.

VP44029X 1998-2002 All HP (Non Dodge Pickups) 5.9L
For Heavy duty Midrange applications: freightliner / tow trucks.

VP44HPX HIGH PERFORMANCE
1998.5-2002 ISB 24 Valve 5.9L
Gain 40+ Horse power. Get more power and better MPG.

VP44 FUEL INJECTION PUMP PACKAGES



Create a package to fit your needs and save money!
VP44 fuel injection pump + Feed Pump + Fuel Filter
Choose from stock replacement to extreme performance. Installation hardware included. *Call today to build your package!*

OEM LIFT PUMP + WIRING HARNESS FOR VP44 PUMPS



HFP923 1998.5 - 2002 Dodge 24 V Cummins
It is recommended to replace this part at the same time as the VP44 injection pump or, if fuel pressure drops below 5psi consistently.

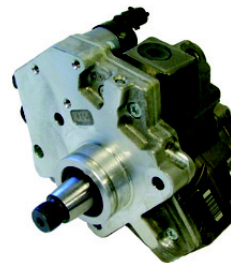
VP44 DISCLAIMERS

Failure to replace feed pump along with the Injection Pump may result in non warranted damage. It is highly recommended that the feed pump be changed along with the injection pump.

Performance chip & add on disclaimer

Tampering with the pumps wires can cause premature pump failure. If the wires are cut the pump is no longer warrantable, and any repairs that need to be made to the injection pump will be the buyers responsibility. In the VP44 pump the fuel is used to cool and lubricate the pump, and the tolerances between the head and the rotor is very fine. Performance chip add on's affect the cooling rate of the pump. The pump will become hotter due to excessive RPM's from the chips programming. When the throttle is backed off the fuel to the pump is reduced, and the pumps cooling capabilities are greatly reduced. Since the pump is hotter from the increased RPM's the rotor siezes in the head and the pump fails. An alternative to cutting into the pumps wires is to use a chip that plugs directly into the trucks ECM. This approach will allow for an increase in HP while not excessively heating the fuel pump. A great example of this is the DiabloSport Power Puck.

HIGH PRESSURE COMMON RAIL CP3 FUEL INJECTION PUMP



CP3-039X
2003-06 Dodge Ram 5.9L

CP3-039HPX HIGH PERFORMANCE
2003-07 Dodge Ram 5.9L
This pump produces approximately 40% additional fuel output. It is highly recommended that you install a FASS system, such as FAST D07 095G, to ensure proper fuel delivery to the injection pump.



DODGE 5.9L

5.9L INJECTION PUMPS (cont.)

P7100 INLINE FUEL INJECTION PUMPS



M090402736854X 1994-95 Dodge 5.9L Automatic Trans For Dodge Pickup Trucks.

M090402736841X 1994-95 Dodge 5.9L Manual Trans For Dodge Pickup Trucks.

M090402736911X 1996-98.5 Dodge 5.9L Automatic Trans For Dodge Pickup Trucks.

M090402736913X 1996-98.5 Dodge 5.9 L Manual Trans For Dodge Pickup Trucks.

VE FUEL INJECTION PUMPS



M100460426103X
1988-89 Dodge 5.9L

M100460426114X
1990-93 Dodge 5.9L

M100460426205XP
1990-93 Dodge 5.9L

5.9L INJECTORS

COMMON RAIL FUEL INJECTORS



M190986435503X
2003-04.5 Dodge Ram 5.9L

M190986435505X
2004.5-06 Dodge Ram 5.9L

DODGE CUMMINS FUEL INJECTORS



BOS0432193630
1998.5-02 Dodge Ram Automatic Trans 5.9L

BOS0432193629
1998.5-02 Dodge Ram Manual Trans 5.9L

BOS0432193581
2000-02 Dodge Ram 5.9L Cummins 24 Valve 245 Hp. (High Output Engine)

BOS0432193635
HIGH PERFORMANCE Marine Fuel Injector, 1998.5-2002 Dodge Ram 5.9L Cummins 24 Valve (All HP)

5.9L TURBOCHARGERS



49183A2010 1988-90 Dodge 2.2L engines
4448992 Mitsubishi

3800471X M11, L10 3536995 Cummins
3592015 4BT 3.9 3800709 Cummins
3536321X 6BT 5.9 3802696 Cummins
3803389X L10 3528553 Cummins
3534923X 6BT 5.9 3802778 Cummins
3536971X 6BT 5.9 3802767 Cummins

5.9L FILTERS

AIR FILTERS



E-1023 K&N Air Filter
1988-93 6BT & 6BTA/Dodge with VE Pump



33-2056 K&N Air Filter
1994-96 6BTA/Dodge with P Pump
1997-99 6BTA & ISB/Dodge
2000-02 ISB/Dodge

Something you need not listed? Call an expert near you:

Bolingbrook, IL
815.886.9900

Palatine, IL
874.991.7867

Peru, IL
815.224.3439

Marion, IA
319.377.7365

Agawam, MA
319.377.7365

Allentown, PA
610.395.3718

Deep River, CT
860.526.5941

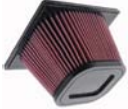
Portland, OR
503.283.5615

Boca Raton, FL
561.241.0242



DODGE 5.9L / 6.7L

5.9L FILTERS (cont.)



E-0776 K&N Air Filter
2003-06 Common Rail/Dodge

OIL FILTERS



3520 Bosch Oil Filter
1988-93 6BT & 6BTA/Dodge with VE Pump
1994-96 6BTA/Dodge with P Pump
1997-99 6BTA & ISB/Dodge
2000-02 ISB/Dodge
2003-06 Common Rail/Dodge

FUEL FILTERS



FS1232 Fleetguard Fuel Filter
1988-93 6BT & 6BTA/Dodge with VE Pump



FS1253 Fleetguard Fuel Filter
1994-96 6BTA/Dodge with P Pump



IN F19528 Racor Fuel Filter
1997-99 6BTA & ISB/Dodge



FS19856 Fleetguard Fuel Filter
2000-02 ISB/Dodge
2003-06 Common Rail/Dodge

6.7L INJECTION PUMPS

HIGH PRESSURE COMMON RAIL CP3 FUEL INJECTION PUMP



CP3-076X
2007.5-2012 Dodge Ram 6.7L

6.7L INJECTORS

COMMON RAIL FUEL INJECTORS



M190986435518X
2007-2012 Dodge Ram 6.7L

M190986435519X
2007-2010.5 Dodge Ram 6.7L / Cab Chassis

6.7L FILTERS

AIR FILTERS



E-0784 K&N Air Filter
2007-09 Common Rail/Dodge



E-0787 K&N Air Filter
2010-12 Common Rail/Dodge

OIL FILTERS



3520 Bosch Oil Filter
2007-09 Common Rail/Dodge
2010-12 Common Rail/Dodge

FUEL FILTERS



FS43257 Fleetguard Fuel Filter Element and Canister
2007-09 Common Rail/Dodge



FS43258 Fleetguard Fuel Filter Element Only
2007-09 Common Rail/Dodge



FS43255 Fleetguard Fuel Filter
2010-12 Common Rail/Dodge



INTERNATIONAL NAVISTAR





NAVISTAR 6.9L

6.9L INJECTION PUMPS



Install kit

DB2 MECHANICAL INJECTION PUMP

M0704540X 1983-87 Mechanical Rebuilt
DIPDPE69110 Install kit

6.9L INJECTORS



Install kit

CAV6760301 1983-1987 NEW Engine Code Letter [A,B,Bb,C,D]
DIPDPE69120 Install kit, includes all parts needed to install 8 injectors

INJECTOR LINES

- 1983-94 Injector line cyl #1 #OTHDE8TZ9A555A
- 1983-94 Injector line cyl #1 E-series (van) #OTHDE8TZ9A555A
- 1983-94 Injector line cyl #2 #OTHDE8TZ9A555B
- 1983-94 Injector line cyl #3 #OTHDE8TZ9A555C
- 1983-94 Injector line cyl #4 #OTHDE8TZ9A555J
- 1983-94 Injector line cyl #4 E-series (van) #OTHDE8TZ9A555D
- 1983-94 Injector line cyl #5 #OTHDE8TZ9A555E
- 1983-94 Injector line cyl #6 #OTHDE8TZ9A555F
- 1983-94 Injector line cyl #7 #OTHDE8TZ9A555G
- 1983-94 Injector line cyl #8 #OTHDE8TZ9A555H
- 1983-94 Injector line clamp (2 line assy) #0THD42678
- 1983-94 Injector line clamp (3 line assy) #0THD42682
- 1983-94 Injector line clamp (4 line assy) #0THD42680

6.9L FUEL SUPPLY PUMP



CAVHFP907 1983-87 6.9L

6.9L VACUUM PUMPS



CAVNLVP4092 1983-87 6.9L Belt Driven

6.9L GLOW PLUGS



FORZD1A 1983-86 Glow Plug - spade connector
CAVHDC905 1983-86 Glow Controller, Round screw in controller
FORZD9 1987 Glow Plug, Bullet connector
CAVHDC906 1987 Glow Controller, Square unit

6.9L SOLENOID



MWE6.9SOKIT 1983-87 Shutdown solenoid kit
NAV1803210C1 1983-87 Fast Idle Solenoid



NAVISTAR 7.3L

7.3L INJECTION PUMPS



Install kit

DB2 MECHANICAL INJECTION PUMP

M0704814X 1988-89 Injection Pump, Mechanical, Rebuilt
M0704823X 1990-91 Injection Pump, Mechanical, Rebuilt
M0705030X 1992-94 Injection Pump, Mechanical, Rebuilt
OTHDP69110 1988-94 Pump Installation Kit

7.3L INJECTORS



Install kit

CAV6760301 1983-87 NEW Engine Code Letter [A,B,Bb,C,D]
STA29455 1992½-94 Injector, Stanadyne, NEW code letter [e]
DIPDPE69120 1988-89 Install kit (all parts to install all 8 inj)
DIP-DPE73120 1990-94 Injector Kit (all parts to install all 8 inj)

See Navistar 6.9L for Injector Lines

7.3L FUEL SUPPLY PUMP



CAVHFP907 - 1983-1987 6.9L

7.3L VACUUM PUMPS



CAVNLVP4092 1988-91 Belt Driven
CAVPOD4092 1983-87 POD ONLY
FORF4TZ2A451A 1992-94 Belt Driven

7.3L GLOW PLUGS



FORZD9 1988-94 Glow Plug, Bullet connector
CAVHDC906 1988-94 Glow Controller, Square unit

7.3L SOLENOID



MWE6.9SOKIT 1983-87 Shutdown solenoid kit
NAV1803210C1 1983-87 Fast Idle Solenoid

Something you need not listed? Call an expert near you:

Bolingbrook, IL
815.886.9900

Palatine, IL
874.991.7867

Peru, IL
815.224.3439

Marion, IA
319.377.7365

Agawam, MA
319.377.7365

Allentown, PA
610.395.3718

Deep River, CT
860.526.5941

Portland, OR
503.283.5615

Boca Raton, FL
561.241.0242



DT466E/1530E / T444E

DT466E/1530E INJECTORS



HEUI INJECTORS

AP63805BA

1824928C94, 1824917C2, 1823736C94, 1819834C1, 1995-97 DT466E 230HP (High Torque) & 250HP Up To Engine S/N 1084867

AP63806BB

1824929C94, 1824918C2, 1824742C91, 1824739C1, 1995-97 DT466E 175HP & 190HP Up To Engine S/N 1028710

AP63807BC

1824930C94, 1824919C2, 1824743C91, 1824740C1, 1995-97 DT466E 195HP, 210HP & 230HP

AP63808BD

1824931C94, 1824920C2, 1824744C94, 1824741C2, 1995-97 I530E 250HP, 275HP & 300HP Up to Engine S/N 1084028

AP63809BE

1829839C93, 1829839C94, 1829837C2, 1829838C94, 1829926C2 / '97-'00 DT466E 175HP, 190HP, 195HP & 230HP Engine S/N 1028711 & Up

AP63810BF

1830146C92, 1830146C93, 1830146C94, 1830148C2, 1830145C92, 1830147C2 / '98-'99 I530E 250HP, 275HP & 300HP

AP63811BI

1830741C92, 1830741C93, 1830741C93P, 1830562C2, 1830740C92, 1830560C2, 1830561C92 / 1999-2000 DT466E 250HP Engine S/N 1125228 & Up

AP63812BJ

1830572C92, 1830572C93, 1830573C2, 1830570C92, 1830571C2 / '97-'99 DT466E 250HP Engine S/N 1084868 to 1125227 / 1999-2000 I530E 250HP, 275HP, 300HP Engine S/N 1133755 & Up

AP63813BN

1830692C91, 1830691C1, 1830693C1, 1830694C91, 1830694C92P, 1830694C93 / 2000 Navistar I530E

AP63814BP

1836251C91, 1836250C1, 1836252C91, 1836253C1, 2000 Navistar DT466E Transit

DT466E TURBOCHARGERS



991523C91 Garrett 409770-9019

991528C91 Garrett 466772-9004

1825412C91 Garrett 466741-9020

991853C91 Garrett 466743-9014

T444E INJECTORS

**AP63800AA**

1822801C98, 1822801C99, 1821836C3, 1822800C95, 1816187C3 - 1994-96 T444E to engine S/N 4601094

AP63801AB

1824583C97, 1825125C1, 1824582C94, 1822803C1, 1997-99 T444E engine S/N 4601095 to 843889

AP63803AC

1824456C96, 1824472C1, 1824455C94, 1822890C1, 1994-96 T444E (High Output) 210HP (High Torque) & 230HP

AP63804AD

1831487C92, 1831487C93, 1831489C1, 1831551C1, 1822890C1 1999-2002 T444E engine S/N 843990 & Up

T444E TURBOCHARGERS



1822767C91 Schwitzer 170290R



NAVISTAR TRUCKS

NAVISTAR TRUCK BOSCH INLINE PUMP

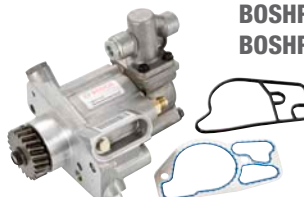


M090402046839X
Exchange Navistar Pump

M090400846569X
Exchange Pump/Nav

M090403446131X
Exchange MW Pump/Nav-DT466

NAVISTAR TRUCK HP OIL PUMP



BOSHPO20X Exchange High PSI Oil Pump
BOSHPO21X Exchange High PSI Oil Pump

NAVISTAR TRUCK HEUI INJECTORS



AP63805BA New Exchange Heui Injector - BA
AP63806BB New Exchange Heui Injector - BB
AP63807BC New Exchange Heui Injector - BC
AP63808BD New Exchange Heui Injector - BD
AP63809BE New Exchange Heui Injector - BE
AP63811BI New Exchange Heui Injector - BI
AP63812BJ New Exchange Heui Injector - BJ
AP63813BN New Exchange Heui Injector - BN
AP63814BP New Exchange Heui Injector - BP
CAVEX63816BP Reman Medium Duty HEUI



APPAP66976 2.9 INJ 04-07

NAVISTAR TRUCK TURBOCHARGERS



TUG51361-5003 Exchange IH Turbo
TUG724193-5005 Exchange IH Turbo (DT466 2002-UP)
TUG734852-9009 Exchange Navistar Turbo

NAVISTAR MODEL 100 PUMPS



AMB1006A100A9556-13R M100 Reman Pump
M05M1009257-1X Exchange M100 Pump
M05M1009274-12X Exchange M100 Pump

Something you need not listed? Call an expert near you:

Bolingbrook, IL
815.886.9900

Palatine, IL
874.991.7867

Peru, IL
815.224.3439

Marion, IA
319.377.7365

Agawam, MA
319.377.7365

Allentown, PA
610.395.3718

Deep River, CT
860.526.5941

Portland, OR
503.283.5615

Boca Raton, FL
561.241.0242



FORD





FORD 6.9L

6.9L INJECTION PUMPS



Install kit

DB2 MECHANICAL INJECTION PUMP

M0704746X 1983-1987 Mechanical Rebuilt
DIPDPE69110 Install kit

6.9L INJECTORS



Install kit

CAV6760301 - 1983-87 NEW Engine Code Letter [A,B,Bb,C,D]
DIPDPE69120 - Install kit, includes all parts needed to install 8 injectors

INJECTOR LINES

- 1983-94 Injector line cyl #1 #OTHDE8TZ9A555A
- 1983-94 Injector line cyl #1 E-series (van) #OTHDE8TZ9A555A
- 1983-94 Injector line cyl #2 #OTHDE8TZ9A555B
- 1983-94 Injector line cyl #3 #OTHDE8TZ9A555C
- 1983-94 Injector line cyl #4 #OTHDE8TZ9A555J
- 1983-94 Injector line cyl #4 E-series (van) #OTHDE8TZ9A555D
- 1983-94 Injector line cyl #5 #OTHDE8TZ9A555E
- 1983-94 Injector line cyl #6 #OTHDE8TZ9A555F
- 1983-94 Injector line cyl #7 #OTHDE8TZ9A555G
- 1983-94 Injector line cyl #8 #OTHDE8TZ9A555H
- 1983-94 Injector line clamp (2 line assy) #OTH42678
- 1983-94 Injector line clamp (3 line assy) #OTH42682
- 1983-94 Injector line clamp (4 line assy) #OTH42680

6.9L FUEL SUPPLY PUMP



CAVHFP907 1983-1987

6.9L VACUUM PUMPS



CAVNLVP4092 1983-1987 Belt Driven
CAVPOD4092 1983-1987 POD ONLY

6.9L GLOW PLUGS



- FORZD1A** 1983-86 Glow Plug - spade connector
- CAVHDC905** 1983-86 Glow Controller, Round screw in controller
- FORZD9** 1987 Glow Plug, Bullet connector
- CAVHDC906** 1987 Glow Controller, Square unit
- FORE4TZ9A451A** 1983-86 Glow Harness Spade (F Series ONLY)
- FORE7TZ9A451A** 1987 Glow Harness, Bullet (F Series ONLY)

6.9L SOLENOID



MWE6.9SOKIT 1983-87 Shutdown solenoid kit
FORE5TZ12B526A 1983-87 Fast Idle Solenoid

6.9L FILTERS



E-1460 1983-87 K&N Air Filter, Pickup & Van



HP-4002 1983-87 Oil Filter

PF F811 1983-87 Fuel Filter

FORD 7.3L IDI

7.3L IDI INJECTION PUMPS



Install kit

DB2 MECHANICAL INJECTION PUMP

M0704812X 1988-89 Injection Pump, Mechanical, Rebuilt
M0704821X 1990-91 Injection Pump, Mechanical, Rebuilt
M0705013X 1992-94 Injection Pump, Mechanical, Rebuilt
M0705069X 1993-94 Inj.Pump, TURBO ONLY Mechanical, Rebuilt
OTHDP69110 1988-94 Pump Installation Kit

7.3L IDI INJECTORS



Install kit

CAV6760301 1983-87 NEW Engine Code Letter [A,B,Bb,C,D]
STA29455 1992½-94 Injector, Stanadyne, NEW code letter [e]
STA29455 1992½-94 Injector, Stanadyne, NEW code letter [e]
STA30406 1993-94 NEW code letter [g] TURBO ONLY

DIPDPE69120 1988-89 Injector Kit (all parts to install all 8 inj)
DIPDPE73120 1990-94 Non Turbo Kit (all parts to install all 8 inj)
DIPDPE73120T 1990-94 Turbo Kit (all parts to install all 8 inj)

See Ford 6.9L for Injector Lines

HEUI INJECTORS



AP63805AA New Exchange Heui Injector - AA
AP63806AB New Exchange Heui Injector - AB
AP63807AC New Exchange Heui Injector - AC
AP63808AD New Exchange Heui Injector - AD
AP63809AE New Exchange Heui Injector - AE

7.3L IDI FUEL SUPPLY PUMP



CAVHFP907 1988-94

7.3L IDI VACUUM PUMPS



CAVNLVP4092 1988-91 Belt Driven
CAVPOD4092 1983-87 POD ONLY
CAVNLVP9897 1992-94 Belt Driven

7.3L IDI GLOW PLUGS



FORZD9 1988-94 Glow Plug, Bullet connector
CAVHDC906 1988-94 Glow Controller, Square unit
FORFOTZ9A451A 1990-91 Only Glow Harness, Bullet (F Series ONLY)

7.3L IDI SOLENOID



MWE6.9SOKIT 1983-87 Shutdown solenoid kit
FORE5TZ12B526A 1983-87 Fast Idle Solenoid

7.3L IDI FILTERS



E-1460 1988-94 Non-Turbo K&N Air Filter



33-2088 1993-94 Turbo K&N Air Filter



HP-4002 1988-94 Turbo/Non-Turbo K&N Oil Filter



PF F829B 1988-94 Turbo/Non-Turbo Fuel Filter

 Something you need not listed? Call an expert near you:

Bolingbrook, IL
815.886.9900

Palatine, IL
874.991.7867

Peru, IL
815.224.3439

Marion, IA
319.377.7365

Agawam, MA
319.377.7365

Allentown, PA
610.395.3718

Deep River, CT
860.526.5941

Portland, OR
503.283.5615

Boca Raton, FL
561.241.0242



6.0L / 6.4L POWERSTROKE

6.0L PS INJECTORS



AP60900

2003-04 Engines built before 9/22/03
F-250 / F-550, Excursion: Engine S/N 0 to 137,745 (Huntsville, AL), Engine S/N 6,000,000 to 6,155,636 (Indianapolis, IN) F-650 / F-750: Engine S/N prior to 112,360 (Huntsville, AL)

AP60901

2004-05 Engines built on or after 9/22/03
F-250 / F-550, Excursion; F-650 / F-750; E Series; LCF (2006)



AP0002

2003-06 Injector Seal Kit

6.0L PS HIGH PRESSURE OIL PUMP



HP032X 2003-04



AP63661 2004.5-10

6.0L PS FICM (Fuel Injection Control Module)



AP65122 2003-04

Ford 6.0L F-Series Super Duty & Excursion 2003-04 up to build date 9/22/2003

AP65123 2004-05

Ford 6.0L F-Series Super Duty 2004 after build date 9/22/2003 & Excursions 2004-2005 build date between 9/23/2003-1/31/05

AP65124 2005-07

Ford 6.0L F-Series Super Duty 2005-2007 & Ford Excursions 2005 after build date 1/31/05 & 2004-2009 Ford E-Series

6.0L PS EGR COOLER



AP63445 2004-07

Includes EGR Cooler Kit AP63446 and Engine Oil Cooler Kit AP63451

6.0L PS TURBOCHARGERS



TUG725390-9002 2003-04.5 Garret

TUG743250-9004 2004-05.5 Garret

TUG743250-9005 2005.5-07 Garret



TUG772441-5001S

2004-07 Garret PowerMax

6.0L PS FILTERS



E-0780 2003-07 K&N Air Filter



33-2341 2004-10 K&N Air Filter



PF L2016 2003-10 Oil Filter



PF F4616 2003-07 Fuel Filter

PF F4606 2004-10 Fuel Filter

6.4L PS INJECTION PUMPS



CR PUMP

FOR8C3Z9A543DRM

2007.5-10 OE#: 1855860c92

6.4L PS INJECTORS



AP64800 2008-10

OEM Part# 8C3Z9E527A

6.4L PS FILTERS



E-0785 2007-10 K&N Air Filter



PF L2016 2007-10 Oil Filter



PF F4617 2007-10 Fuel Filter

7.3L POWERSTROKE

7.3L PS INJECTORS



HEUI INJECTORS

- AP63805AA**
1994-98 New Exchange HEUI Injector - AA
- AP63801AB**
1997-99 New Exchange HEUI Injector - AB
- AP63803AD**
1999-03 New Exchange HEUI Injector - AD
- AP63804AE**
1999-03 New Exchange HEUI Injector - AE
(#8 Injector On Limited Number Of Vehicles)



- AP0001**
1994-03 Injector Seal Kit

7.3L PS INJECTOR DRIVE MODULES



- AP65110** 1994-98 F-Series & E-Series
- AP65120** 1999-03 F-Series & E-Series

7.3L PS VACUUM PUMPS



- CAVNLP5041** 1994-96 F-Series & E-Series
- CAVPOD4342** 1997-00 F-Series & E-Series
- AP63433** 1998-03 Electronic F-Series & E-Series

7.3L PS CAMSHAFT POSITION SENSOR



- CAVHTS100** 1994-96 F-Series & E-Series
- CAVHTS101** 1997-00 F-Series & E-Series

7.3L PS GLOW PLUGS



- DRX00138** 1994-02 Turbo Diesel
- DRX01004** 1995-03

7.3L PS VALVE COVER WIRE HARNESS



- CAVHTP110**
1994-97 F-Series & E-Series
4 of these are required per engine



- CAVHTP119**
1998-03 F-Series & E-Series
2 of these are required per engine



- CAV7135-284**
1994-97 F-Series & E-Series Gasket Set



- CAV7135-285**
1998-03 F-Series & E-Series Gasket Set

7.3L PS TURBOCHARGERS



- TUG466163-9014** 1995-97 Garret

- TUG702650-9005** Early 1999 w/ Pedestal
- TUG702012-9012** 1999.5-02 w/ Pedestal

7.3L PS FILTERS



- E-1946** 1994-98 K&N Air Filter



- 33-2123** 1999 K&N Air Filter (Before 12/9/98)



- 33-2248** 1999-03 K&N Air Filter



- 3530** 1994-03 Oil Filter



- PF F4595** 1994-98 Fuel Filter



- PF F4596** 1999-03 Fuel Filter (Before 12/8/98)

 **Something you need not listed? Call an expert near you:**

Bolingbrook, IL
815.886.9900

Palatine, IL
874.991.7867

Peru, IL
815.224.3439

Marion, IA
319.377.7365

Agawam, MA
319.377.7365

Allentown, PA
610.395.3718

Deep River, CT
860.526.5941

Portland, OR
503.283.5615

Boca Raton, FL
561.241.0242



CHEVY/GMC





6.2L / 6.5L CHEVY / GMC

6.2L INJECTION PUMPS



Install kit

DB2 INJECTION PUMP

- M0704502X** 1982-88 Light Duty
- M0704544X** 1982-88 Heavy Duty
- DPE62110** 1982-93 Pump Install kit

6.2L INJECTORS



M02NA50X
1982-83 Coarse Thread



M02NA51X
1982-89 Van Style, Short Body



M02NA52X
1984-89 Fine Thread



M02NA55X
1990-93 Non-Turbo



DPE62120
Injector Install Kit
(all parts to install all 8 inj)

6.2L VACUUM PUMPS



- CAVLVP8253** 1982-93 Belt Driven
- CAVLVP1697** 1982-93 Gear Driven

6.2L FEED PUMPS



CAVFP909 1982-93

6.2L GLOW PLUGS



- DRX00050** 1982-93 11 volt Glow Plug
- DRX01002** 1982-84 Glow Plug Controller
- DRX01005** 1985-93 Glow Plug Controller

6.2L FILTERS



E-1690 1982-93 K&N Air Filter



3510 1982-93 Oil Filter



86123 1982-83 Fuel Filter



27288 1984-92 Fuel Filter



31712 1993 Fuel Filter

6.5L INJECTION PUMPS



Install kit

DS4 ELECTRONIC INJECTION PUMP

- M1605521X** 1994-00 Heavy & Light Duty
- M1605068X** 1994 Heavy & Light Duty (Before January 1994)
- DPE65110** 6.5L Pump Install kit



STA35976
6.5L PMD FSD Box w/ Wiring Harness



MWEFSD01
1994-04 FSD Cooler

6.5L CHEVY / GMC

6.5L INJECTION PUMPS (cont.)



Install kit

DB2 INJECTION PUMP

- M0704911X** 1992-93 Heavy Duty Turbo
- M0704970X** 1991-93 Super Duty Turbo
- M0705088X** 1994-97 Heavy Duty Non-Turbo Van
- M0705119X** 1994-97 Heavy Duty non-Turbo Truck
- DPE65110** 6.5L Pump Install kit

6.5L INJECTORS



M02NA55X
1992 & up, Non Turbo



M02NA56X
1992 & up, Turbo



DPE62120
Injector Install Kit
(all parts to install all 8 inj)

6.5L VACUUM PUMPS



CAVNLVP3450 - 1996-00 Belt Driven

6.5L FEED PUMPS



CAVFP909 - 1994-96



CAVFP905 - 1982-93

6.5L GLOW PLUGS



DRX00050 1982-02 11 volt Glow Plug

AP63420 1994-02 Glow Plug Relay

6.5L TURBOCHARGERS



TURGM3X
1992-93 Turbo Diesel Trucks



TURGM4X
1994-97 Turbo Diesel Pick-Ups



TURGM6X
1994-00 Turbo Diesel Vans & H1 Hummer



TURGM8X
1998-00 Turbo Diesel Pick-Ups



TUG759622-9005
2006-07 LBZ & LMM Garrett

6.5L FILTERS



33-2062-1 1992-96 K&N Air Filter



E-1796 1997-00 K&N Air Filter



3510 1992-00 Oil Filter



31712 1992-00 Fuel Filter

Something you need not listed? Call an expert near you:

Bolingbrook, IL
815.886.9900

Palatine, IL
874.991.7867

Peru, IL
815.224.3439

Marion, IA
319.377.7365

Agawam, MA
319.377.7365

Allentown, PA
610.395.3718

Deep River, CT
860.526.5941

Portland, OR
503.283.5615

Boca Raton, FL
561.241.0242



6.6L DURAMAX

6.6L DM INJECTION PUMPS



HIGH PRESSURE COMMON RAIL PUMP

- M17CP3-017X 2001-04 LB7
- M17CP3-017HPX 2001-04 LB7 **HIGH PERFORMANCE PUMP**
- M17CP3-030X 2004.5-05 LLY
- M17CP3-037X 2006-10 LBZ/LMM



BOS0445010616 2011-Current LML

6.6L DM INJECTORS



M190986435502X
2001-04 LB7



M190986435504X
2004.5-06 LLY



M190986435521X
2006-07 LBZ



BOS0445120082
2007.5 LMM



BOS0445117008
2011-Current Piezo LGH Van Only



BOS0445117010
2011-Current Piezo LML



DIPRTF26403 2001-04 6.6L Injector Install Kit

6.6L DM FICM (Fuel Injection Control Module)



BOS0281010014 2001-04 LB7
BOS0281011134 2004.5-05 LLY

6.6L DM GLOW PLUGS



DRX00058 2001-04 LB7
DRX00057 2006-11

6.6L DM TURBOCHARGERS



TUR8973077111X
2001-03 LB7 IHI



TUG736554-9011
2004-06 LLY Garrett

6.6L DM FILTERS



33-2135 2001-05 K&N Air Filter



E-0781 2005-10 K&N Air Filter



33-2466 2011-13 K&N Air Filter



3511 2001-13 Oil Filter



PF F50216 2001-10 & 2011-13 Fuel Filter



PF F558095 2005-13 Fuel Filter



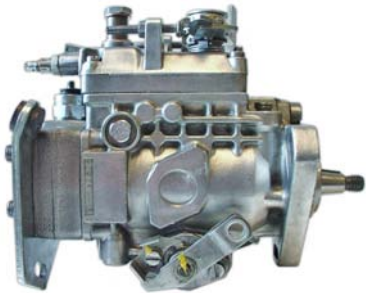
VOLKSWAGEN





1.5L / 1.6L / 1.9L TDI

1.5L/1.6L INJECTION PUMPS



M100460494078X 1981-84 Dasher, Jetta, Rabbit, Vanagon
M100460494161X 1985-86 Golf, Jetta, Vanagon
M100460494130X 1984 Rabbit
M100460494007X 1977-80 Dasher, Rabbit
M100460494082X 1981-83 Dasher, Jetta, Rabbit, Vanagon

1.5L/1.6L INJECTORS



M02NA13X
 1981-84 Dasher, Jetta, Rabbit, Vanagon



M02NA10X
 1977-80 Dasher, Rabbit

1.5L/1.6L GLOW PLUGS



DRX00069
 1982-92 Golf, Jetta, Quantum, Rabbit, Vanagon

1.5L/1.6L FILTERS



MFIW940/25
 1980-92 Dasher, Golf, Jetta, Quantum, Rabbit, Vanagon

1.9L TDI INJECTION PUMPS



M150460404970X 1998-01 Golf, Jetta
M150460414987X 1996-06 11mm Automatic Golf, Beetle, Jetta, Passat
M150460404977X 1998-06 10mm Manual Golf, Beetle, Jetta

1.9L TDI FEED PUMPS



VWA1J0919050
 2004-06 Golf, Jetta, Beetle BEW

1.9L TDI VACUUM PUMPS



VWA038145209N
 2004-06 Golf, Beetle • 2004-05 Jetta, Passat BEW/BHW Engines

1.9L TDI TIMING BELT KITS



VWA038198119E 1998-03
 Jetta, Golf, Beetle ALH Engines / A4 Chassis



VWA038198011G 2004-06
 Jetta, Golf, Beetle BEW Engines / A4 Chassis

1.9L TDI GLOW PLUGS



DRX00059
 1997-05 Dual Coil

1.9L TDI / 2.0L TDI / 5.0L TDI

1.9L TDI FILTERS



MFICUK2862 Cabin Filter
1998-06 Beetle, Golf, Jetta



VWA1K1819653A Cabin Filter
2005-06 Jetta



MFIWK842/4 Fuel Filter
1997-99 Jetta AHU Engines / A3 Chassis
1996-97 Passat AAZ / Z1 Engines / B4 Chassis



MFIWK853/3X Fuel Filter
1998-06 Jetta, Golf, Beetle, Passat ALH, BEW, BRM, BHW Engines / A4, A5, B5.5 Chassis



MFIPU936/2X Fuel Filter
2005.5-06 Jetta BRM Engine / A5 Chassis
2009 Jetta TDI



MFIPU936/1X Fuel Filter
2005.5-06 Jetta BRM, CBEA Engines / A5 Chassis
2009 Jetta TDI



MFIC35154 Air Filter
2005-06 Jetta



MFIC27154/1 Air Filter
1997-99 Jetta AHU Engines / A3 Chassis



MFIC37153 Air Filter
1998-06 Jetta, Golf, Beetle, Passat ALH, BEW, BRM, BHW Engines / A4, A5, B5.5 Chassis



MFIC37153/1 Air Filter
2004-05 Jetta, Golf, Passat BEW, BHW Engines / A4, B5.5 Chassis



MFIC31152/1 Air Filter
1996-97 Passat AAZ, 1Z Engines / B4 Chassis



MFIW840/2 Oil Filter
1996-05 Jetta, Passat AHU, AAZ / 1Z, A3, B4, B5.5 Chassis

1.9L TDI FILTERS (cont.)



MFIHU726/2X Oil Filter
1998-06 Jetta, Golf, Beetle ALH, BEW, BRM, BHW Engines / A4, A5, B5.5 Chassis



MFIHU719/7X Oil Filter
2005.5-06 Jetta BRM Engine / A5 Chassis

2.0L TDI VACUUM PUMPS



VWA038145209N
2004-06 Golf, Beetle • 2004-05 Jetta, Passat BEW/BHW Engines

2.0L TDI FILTERS



MFIWK853/3X Fuel Filter
1998-06 Jetta, Golf, Beetle, Passat ALH, BEW, BRM, BHW Engines / A4, A5, B5.5 Chassis



MFIC37153 Air Filter
1998-06 Jetta, Golf, Beetle, Passat ALH, BEW, BRM, BHW Engines / A4, A5, B5.5 Chassis



MFIC37153/1 Air Filter
2004-05 Jetta, Golf, Passat BEW, BHW Engines / A4, B5.5 Chassis



MFIC26168 Air Filter
2004-05 Passat BHW Engines / B5.5 Chassis



MFIHU726/2X Oil Filter
1998-06 Jetta, Golf, Beetle ALH, BEW, BRM, BHW Engines / A4, A5, B5.5 Chassis

5.0L TDI FILTERS



MFIPU1040X Fuel Filter
2008 Touareg



MFIC39219 Air Filter
2006-09 Touareg

 **Something you need not listed? Call an expert near you:**

Bolingbrook, IL
815.886.9900

Palatine, IL
874.991.7867

Peru, IL
815.224.3439

Marion, IA
319.377.7365

Agawam, MA
319.377.7365

Allentown, PA
610.395.3718

Deep River, CT
860.526.5941

Portland, OR
503.283.5615

Boca Raton, FL
561.241.0242

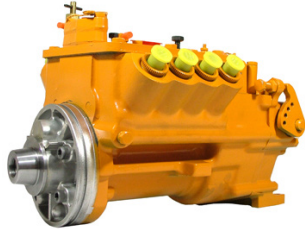


CATERPILLAR



ON HIGHWAY / INDUSTRIAL APPLICATIONS

ON HIGHWAY INJECTION PUMPS



3208 PUMPS

M113208X
Non-Turbo 250 HP Engines

M113208TX
Turbo 210 HP Engines



MWE3208PM
3208 Pump Install Kit
Required for both 3208 pumps



3306 PUMPS

M113306X Rebuilt Exchange



3406 B/C PUMPS

M113406BX Rebuilt Exchange
M113406CX Rebuilt Exchange

3116 PUMPS

M113116X Rebuilt Exchange

ON HIGHWAY TIMING PINS



CAT3P1544 For Cat 3208 Pumps
CAT6V4186 For 3306 & 3406B Pumps

ON HIGHWAY FEED PUMPS



M113406B-TPX 3406B Feed Pump

ON HIGHWAY INJECTORS



3116 INJECTORS

CATOR8633 Rebuilt Exchange



3126 INJECTORS

PRO0R9349R Rebuilt Exchange
PRO0R9350R Rebuilt Exchange



C7 INJECTORS

PRO10R4761R Rebuilt C7 Injector
PRO10R4762R Rebuilt C7 Injector
PRO10R4763R Rebuilt C7 Injector



3208 INJECTORS

CATOR3420 Turbo



CATOR3421 3406B Injector

INDUSTRIAL/OFF ROAD PUMPS



3412 PUMPS

M113412X Rebuilt Exchange



3408 PUMPS

M113408X Rebuilt Exchange



CUMMINS





CUMMINS ENGINES

BOSCH P PUMPS



- M090402734801X** Rebuilt Cummins 4BT Pump
- M090402746614X** Rebuild & Return Bosch Inline Pump
- M090402736813X** Rebuilt Cummins Pump
- M090402736851X** Exchange Cummins Pump - RS7332
- M090402736865X** Exchange Cummins Pump - RS7342
- M090402036762X** Rebuilt 6 Cyl P Pump
- M090402736840X** Exchange Cummins/Ford Pump - RS7265
- M100460426205XP** Exchange Ve Pump/Cummins - MT KSB
- M09042736840X** Exchange Cummins/Ford Pump - RS7265
- M090402736885X** Exchange Cummins Pump - RS7370
- M090402736848X** Exchange Cummins/Ford Pump - RS7314
- M090400866219X** Exchange Cummins Pump
- M090402736848** Exchange Cummins/Ford Pump - RS7314
- M090402736867X** Exchange Cummins Pump P7350
- M090402736834X** Exchange Cummins/Ford Pump RS7265

BOSCH VE PUMPS



CUM3963961
VE Injection Pump

ISC CAPS



CAPS PUMPS

- M204076442X**
Rebuilt CAPS Inj Pump
- M204076441X**
Rebuilt CAPS Inj Pump
- M204076443X**
Rebuilt CAPS Inj Pump



TRANSIENT SUPPRESSOR

CEP3944110 Transient Suppressor

CUMMINS PT PUMPS



M01PTG-2807X
Rebuilt PTG VS LH Pump

M01AFC-9351X
EX AFC/VS CPL0650@2100

QST H PUMPS



M090402796206X
Rebuilt Cummins H Pump

M090402796207X
Rebuilt Cummins H Pump

CUMMINS ENGINES

CUMMINS ISB

ISB VP PUMPS



M15VP44029X
Exchange Cummins VP44 Pump



M15VP300189X
Exchange VP30



M1547006005
Rebuilt Pump
BOS0470006006R
Reman Injection Pump



ISB TRANSFER PUMP

AP4943048
Fuel Transfer Pump Kit

ISB INJECTORS



BOS432193635
HIGH PERFORMANCE Marine
Fuel Injector

ISB COMMON RAIL INJECTORS



BOS98645532
CR Injector

CRX4088665PX
Exchange Injectors

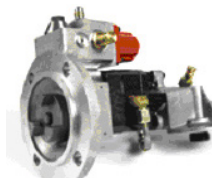
CUMMINS ISB (cont.)



ISB TURBOCHARGERS

TUR4043225X
Exchange Cummins Turbo

CUMMINS CELECT



CELECT PUMPS

M01Z991XUB
EX CELECT Pump W/Line & Filter
Base

M01Z991X
Exchange CELECT Pump



CELECT INJECTORS

CAVEX631767
Delphi Reman Cummins Celect
Injector

DELPHI DP210 PUMPS



M08DP2109320A292WX
Exchange DP210 Pump

M08DP2109320A303WX
Exchange DP210 Pump

 **Something you need not listed? Call an expert near you:**

Bolingbrook, IL
815.886.9900

Palatine, IL
874.991.7867

Peru, IL
815.224.3439

Marion, IA
319.377.7365

Agawam, MA
319.377.7365

Allentown, PA
610.395.3718

Deep River, CT
860.526.5941

Portland, OR
503.283.5615

Boca Raton, FL
561.241.0242



HINO

HINO





HINO ENGINES

HINO INJECTION PUMPS



M13294050-0158X
Exchange HP4 Pump

M13191000-9161X
Rebuilt 6 Cyl EP9 Pump



TICS PUMPS

M12107691-30763X
Rebuilt TICS Pump

M12107491-3072X
Rebuilt TICS Pump



JOHN DEERE

JOHN DEERE





JOHN DEERE

JOHN DEERE PUMPS



DB2 PUMPS

M0604807X
John Deere Pump - RE 40409

M0605672X
John Deere - RE505358

M0605593X
Exchange John Deere Pump

M0604615X
Exchange John Deere DB2 Pump

M0605289X
Rebuilt Standyne Pump

STA05830
New Pump

M0604478X
Exchange John Deere DB2 Pump

M0604499X
Rebuilt Deere Pump



EDC PUMPS

M090402796813X
Exchange EDC Pump

M090402796829X
Exchange EDC Pump
6081 Engine w/ Electronic Gov

M090402796828X
Injection Pump



JDB PUMPS

M0602400X
Rebuilt Inj Pump 4320 Tractors

M0602401X
Rebuilt John Deere Pump

M0602405X
Exchange JDB-2405 Pump



DB PUMPS

M06DBGVC633-5AJX
Rebuilt Pump 4020 Tractors

M06DBGVC631-1AJX
Rebuilt Pump 4010 Tractors

M06DBGVC429-1DHX
Rebuilt Injection Pump



DM PUMPS

M0602580X
Rebuilt DM2 Pump 4230 Tractors

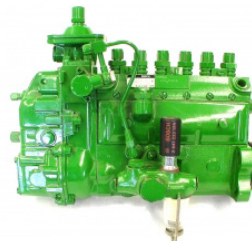


BOSCH PUMPS

M090400876186X
Exchange "A" Pump 4430 Tractors



M099400230012X
Exchange "A" Pump 7700 Tractors



M099400231010X
Rebuilt Exchange "P" Pump 8430 Tractors

JOHN DEERE

JOHN DEERE IFS INJECTORS



STA38230
4520, 4720, & 5325 Tractor

STA38231
4T LT OEM

STA38229
5225 Tractor

STA38225
4T/4TW, 5T OEM

STA38237
4T/5T OEM, 317, 320, 325 SSL

 **Something you need not listed? Call an expert near you:**

Bolingbrook, IL
815.886.9900

Palatine, IL
874.991.7867

Peru, IL
815.224.3439

Marion, IA
319.377.7365

Agawam, MA
319.377.7365

Allentown, PA
610.395.3718

Deep River, CT
860.526.5941

Portland, OR
503.283.5615

Boca Raton, FL
561.241.0242



MACK TRUCKS





MACK TRUCKS

MACK TRUCKS EUP



BOS0986445008
Electronic Unit Pump
For 2001-02 Mack E7 Series

BOS0986445004
Electronic Unit Pump
For 1997-01 Mack E7 Series

MACK TRUCKS MECHANICAL PUMP



M090402746896X
Mack E7-350 - 313GC5188P12

M090402746852X
Mack E7-400 4VH 313GC5185P6

MACK TRUCKS V-MACK



M090402996312X
Mack E7-350
313GC5225P1

M090402796807X
Mack E7-400
4VH 313GC5185P6



MITSUBISHI





MITSUBISHI TRUCKS

MITSUBISHI PUMPS



MECHANICAL PUMPS

M12101608-6353X
Injection Pump



ECD-V4 PUMPS

M13098000-2300X
Fuso Canter With 4M50T Engines

M13098000-2460X
Fuso FH, FK, & FM With 4M50T Engines



HP PUMPS

M17CP3-028X
Rebuilt CP3 Pump



M13294050-0051X
HP4 Pump (ME306387)



TICS PUMPS

M12107492-2163X
Rebuilt TICS RED3 Pump

M12107691-2625X
Rebuilt MD-TICS Pump

M12107691-2635X
Rebuilt TICS Pump

M12107691-2140X
MD-TICS Pump Exchange

M12107692-5292X
Rebuilt TICS Pump

M12107492-2072X
Exchange TC Pump



NEW HOLLAND

NEW HOLLAND





NEW HOLLAND

NEW HOLLAND OFF HIGHWAY PUMPS



M08DP2008922A181WX
Rebuilt DP203 Pump



M08P5598
REBUILD 4 CYL PUMP-FORD

CAVP5598-2G-R
REBUILT SIMMS PUMP



PERKINS



PERKINS

PERKINS BOSCH VE PUMPS



BOS0460426275
Fits 6.0 L Perkins 120 kw eng

PERKINS VP PUMPS



M150470004014X
Exchange VP30 Pump
OEM 2644N204, 0 470 004 014

PERKINS DELPHI PUMPS



DP210 PUMPS

M08DP2109320A423GX
Rebuilt DP210 Pump

M08DP2109320A141TX
Rebuilt DP210 Pump

M08DP2109320A342GX
Rebuilt DP210 Pump

M08DP2109320A532GX
Rebuilt DP210 Pump



DP200 PUMPS

M08DP2008923A082GX
Rebuilt DP200 Pump

M08DP2008925A330GX
Rebuilt DP200 Pump

M08DP2008923A173GX
Exchange DP200 Pump

PERKINS TURBOCHARGERS

PER2674A343
NEW Turbo



VOLVO





VOLVO

VOLVO CONSTRUCTION PUMPS



H-PUMPS

M090402696035X
Exchange Volvo H-Pump 9011031408

M090402796041X
Exchange Volvo H-Pump



VE PUMPS

M1000460416047X
Exchange Volvo VE Pump



P PUMPS

M090401846968X
Exchange Volvo Pump 9011031149

M090401876749X
Reman Volvo Pump

M090402046889X
Exchange Volvo Pump 9011127753

M090402896022X
Rebuilt Volvo Pump

M090403476146X
Exchange Volvo Pump 9011032700

VOLVO INJECTORS

BOS986441006
Volvo Common Rail Injector

VOLVO INJECTORS (cont.)



CAVEX631002
Electronic Unit Injector For Volvo D12 12.1L

CAVEX631003
Electronic Unit Injector For Volvo D12 12.1L

CAVEX631004
Electronic Unit Injector For Volvo D12 12.1L

CAVEX631006
Electronic Unit Injector For Volvo D12 12.1L

CAVEX631007
Electronic Unit Injector For Volvo D12 12.1L

CAVEX631008
Electronic Unit Injector For Volvo D12 12.1L

VOLVO TURBOCHARGERS



TUR170-032-0041
Rebuilt Holset Volvo Turbo



Something you need not listed? Call an expert near you:

Bolingbrook, IL
815.886.9900

Palatine, IL
874.991.7867

Peru, IL
815.224.3439

Marion, IA
319.377.7365

Agawam, MA
319.377.7365

Allentown, PA
610.395.3718

Deep River, CT
860.526.5941

Portland, OR
503.283.5615

Boca Raton, FL
561.241.0242



© 2014-2015 Seidel Diesel Group: Midwest/Metro/Pacific/International Fuel Injection · All Rights Reserved

